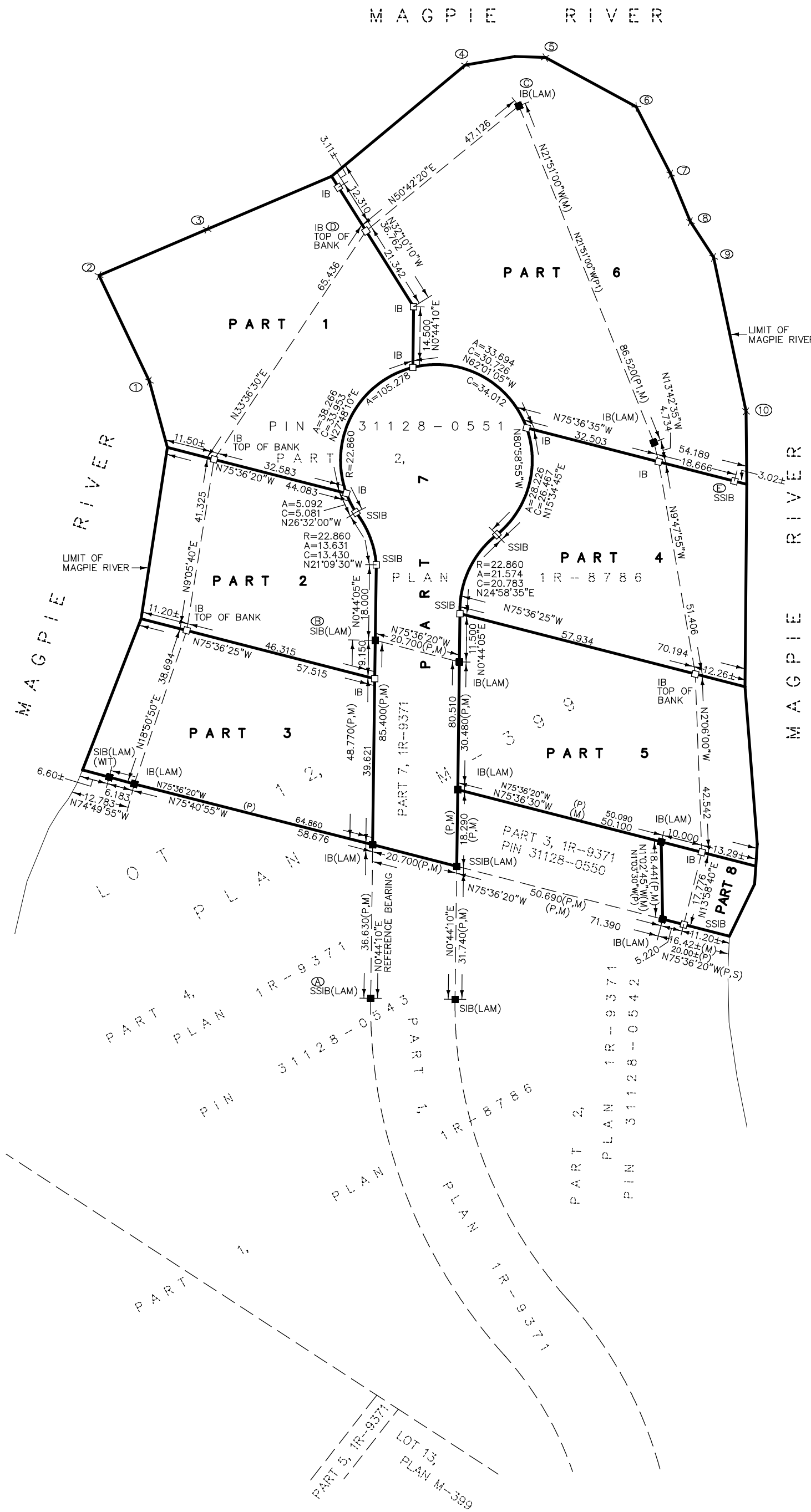


PLAN OF SURVEY OF
PART OF LOT 12
REGISTERED PLAN M-399
 TOWNSHIP OF DUBREUILVILLE
 DISTRICT OF ALGOMA
 SCALE: 1 : 1000
 METRES
 D.S. Urso Surveying Ltd.



I REQUIRE THIS PLAN TO BE DEPOSITED UNDER THE LAND TITLES ACT.

PLAN 1R- 13224

July 13th, 2016

RECEIVED AND DEPOSITED

July 13th, 2016

DATE

DATE

"M. Agliani"

D.S. URSO - ONTARIO LAND SURVEYOR

REPRESENTATIVE FOR LAND REGISTRAR FOR THE LAND TITLES DIVISION OF ALGOMA (N^o 1)

SCHEDULE

PART	LOT	PLAN	HECTARES	PIN
1			0.350	PART OF 31128-0551
2			0.220	PART OF 31128-0551
3			0.249	PART OF 31128-0551
4			0.283	PART OF 31128-0551
5	PART OF 12	REGISTERED PLAN M-399	0.294	PART OF 31128-0551
6			0.621	PART OF 31128-0551
7			0.313	PART OF 31128-0551
8			0.036	PART OF 31128-0551

PARTS 1 TO 8 INCLUSIVE COMPRISE ALL OF PIN 31128-0551

METRIC NOTE

DISTANCES AND COORDINATES SHOWN ON THIS PLAN ARE IN METRES AND CAN BE CONVERTED TO FEET BY DIVIDING BY 0.3048.

INTEGRATION COORDINATE TABLE

OBSERVED REFERENCE POINTS (ORPs) DERIVED FROM PRECISE POINT POSITIONING (PPP) SERVICE DUAL FREQUENCY STATIC GPS OBSERVATIONS USING MONUMENTS 'A' AND 'B' HAVING A BEARING OF N0°44'10"E UTM ZONE 16 NAD 83 (CSRS)(1997.0) COORDINATES TO URBAN ACCURACY PER SEC. 14(2) OF O.REG. 216/10.

POINT ID	NORTHING	EASTING
ORP A	5358401.771	681424.100
ORP B	5358487.164	681425.196
ORP C	5358614.676	681459.440

COORDINATES CANNOT, IN THEMSELVES, BE USED TO RE-ESTABLISH CORNERS OR BOUNDARIES SHOWN ON THIS PLAN.

SCALE FACTOR NOTE

DISTANCES ON THIS PLAN ARE HORIZONTAL GROUND DISTANCES AND CAN BE CONVERTED TO GRID DISTANCES BY MULTIPLYING BY THE AVERAGE COMBINED SCALE FACTOR OF 0.9998981.

ROTATION NOTE

FOR BEARING COMPARISONS, A ROTATION OF 1°49'30" COUNTER CLOCKWISE WAS APPLIED TO PLANS 'P' AND 'P1' TO CONVERT TO GRID BEARINGS.

LEGEND

- DENOTES FOUND EVIDENCE
- DENOTES PLANTED MONUMENT
- IB DENOTES IRON BAR
- SIB DENOTES STANDARD IRON BAR
- SSIB DENOTES SHORT STANDARD IRON BAR
- M DENOTES MEASURED
- P DENOTES DEPOSITED PLAN 1R-9371
- P1 DENOTES DEPOSITED PLAN 1R-8786
- S DENOTES SET
- WIT DENOTES WITNESS
- LAM DENOTES L.A. MILLER, O.L.S.
- PIN DENOTES PROPERTY IDENTIFICATION NUMBER

BEARING NOTE

BEARINGS ARE UTM GRID DERIVED FROM PRECISE POINT POSITIONING (PPP) SERVICE DUAL FREQUENCY STATIC GPS OBSERVATIONS ON MONUMENTS 'A' AND 'B', SHOWN HEREON, HAVING A BEARING OF N0°44'10"E AND ARE REFERRED TO THE CENTRAL MERIDIAN 87° WEST LONGITUDE OF UTM ZONE 16 NAD 83 (CSRS)(1997.0).

SURVEYOR'S CERTIFICATE

I CERTIFY THAT:

- THIS SURVEY AND PLAN ARE CORRECT AND IN ACCORDANCE WITH THE SURVEYS ACT, THE SURVEYORS ACT, AND THE LAND TITLES ACT AND THE REGULATIONS MADE UNDER THEM.
- THE SURVEY WAS COMPLETED ON MAY 26th, 2016.

July 13th, 2016
 SAULT STE. MARIE, ONTARIO

D.S. URSO
 ONTARIO LAND SURVEYOR

WATER TIES FROM POINT 'D'

POINT	BEARING	DISTANCE
1	S55°18'00"W	62.862
2	S80°31'35"W	64.542
3	N89°22'25"W	37.917

WATER TIES FROM POINT 'C'

POINT	BEARING	DISTANCE
4	N52°40'05"W	16.066
5	N28°33'40"E	13.159
6	S89°34'25"E	27.966
7	S65°49'40"E	39.678

WATER TIES FROM POINT 'E'

POINT	BEARING	DISTANCE
8	N9°38'10"W	62.843
9	N5°18'30"W	53.663
10	N9°24'25"E	16.905

D.S. Urso Surveying Ltd.
 Ontario Land Surveyors ♦ Canada Land Surveyors
 Planning Consultants
 10 KING ST. SAULT STE. MARIE, ONT. P6A 2T1 TEL: (705) 254-7851 FAX: (705) 254-5571
 DRAWN: KF FIELD: Gmc / MI FILE No: R-6590
 CHECKED: DSU